

# “materia” project



casamood

# “materia” project

**Nuove superfici e colori per casamood che con una precisa scelta progettuale propone abbinamenti e soluzioni capaci come sempre di emozionare. "Materia project" e' il punto di arrivo di itinerari creativi, suggestioni, memorie, in cui linee pulite e colori decisi sono ingredienti perfetti che donano un forte valore espressivo ai luoghi dell'abitare. I contrasti di chiaro scuro sono ispirati alla pittura, l'eleganza, ottenuta per sottrazione, caratterizza il decoro, la ricchezza tattile della materia ne esalta le diversità. Semplice e sofisticato questo progetto e' in continuo equilibrio tra artigianato e modernità, tra arte e design attraverso un filo cromatico delicato e accattivante.**



## casamood

tutte le superfici in un progetto colore  
all the surfaces in one only colour project

# mixable surfaces

80x180  
40x120  
60x120  
20x120  
40x80

80x80  
20x80  
60x60

80x80  
20x80  
60x60



**“Materia” project  
è un progetto  
coordinato di gres  
fine porcellanato e  
vetro che presenta 6  
superfici differenti  
perfettamente  
integrate fra di loro.**

**“Materia” project is a coordinated  
porcelain and glass tile  
project that has 6  
different surfaces which integrate  
perfectly with one another.**

**“Materia” project est un projet coordonné  
qui mêle le grès cérame fin et le verre  
et présente 6 surfaces différentes  
parfaitement intégrées les unes aux autres.**

**“Materia” Project ist ein farblich  
abgestimmtes Projekt aus  
Feinsteinzeug und Glas mit 6  
verschiedenen, perfekt untereinander  
integrierten Oberflächen.**

**“Materia” project es un proyecto coordinado  
de gres fino porcelánico y vidrio con 6 superficies  
diferentes, perfectamente integradas.**

**20x120  
15x120**

**22,5x25**

**20x80**



**crusted  
honed  
brushed  
bark  
glass**

**01**

**crusted  
honed  
brushed  
bark  
glass**

**02**

**crusted  
honed  
brushed  
bark  
glass**

**03**

**crusted  
honed  
brushed  
bark  
glass**

**04**

**crusted  
honed  
brushed  
bark  
glass**

**05**

**honed  
brushed  
bark  
glass**

**06**

**honed  
brushed  
bark  
glass**

**07**

**honed  
brushed  
bark  
glass**

**08**

New surfaces and colours for Casamood which, with a specific design choice, offer matches and solutions able as always to evoke excitement. "Materia" project is the point of arrival for creative itineraries, suggestions, memories, where clean lines and decisive colours are perfect ingredients that give dwelling places strong expressive value. The dark and light contrasts are inspired by the paint. Elegance, obtained through subtraction, characterises the décor. The rich texture of the material enhances the diversities. Simple and sophisticated, this project is a constant balance between old style craftsmanship and modernism, art and design, through a delicate and attractive line of colours.

Casamood introduit des surfaces et des couleurs nouvelles et, à travers un choix de projet spécifique, propose des combinaisons et des solutions comme toujours source d'émotion. "Materia" project est le point de convergence d'itinéraires créatifs, de suggestions, de mémoires, où les lignes épurées et les couleurs tranchées sont les ingrédients parfaits pour donner aux lieux de l'habitation une forte charge expressive. Les contrastes en clair-obscur s'inspirent de la peinture. L'élégance, obtenue par détournement, caractérise le décor ; la richesse tactile de la matière en fait ressortir les diversités. À la fois simple et sophistiqué, ce projet chemine en équilibre entre l'artisanat et la modernité, entre l'art et le design, sur un fil chromatique délicat et captivant.

Neue Oberflächen und Farben für Casamood, das mit einer präzisen Projektwahl stets emotionsreiche Kombinationen und Lösungen bietet. "Materia" Project ist das Ergebnis der kreativen Wege, Eindrücke und Erinnerungen, in denen saubere Linien und kräftige Farben die perfekten Bestandteile sind, um den Wohnräumen eine starke Ausdrucksfähigkeit zu verleihen. Die Hell Dunkelkontraste entstammen der Malerei, die durch Subtraktion erhaltene Eleganz kennzeichnet den Dekor und die Fülle an Tastempfindungen hebt die Vielfalt hervor. Dieses einfache und zugleich auserlesene Projekt hält sich anhand eines feinen und mitreißenden Farbfadens konstant im Gleichgewicht zwischen Handwerk und Modernität, Kunst und Design.

Con una clara definición de su proyecto, Casamood propone nuevas superficies y colores que permiten obtener combinaciones y soluciones capaces - como siempre- de emocionar. "Materia" project es el punto de llegada de diferentes procesos creativos, sugerencias y memorias, en los que las líneas esenciales y los colores fuertes son los ingredientes ideales para dar un fuerte valor expresivo a los lugares en los que transcurre nuestra vida cotidiana. Sus claroscuros se inspiran en la pintura; la elegancia, obtenida por sustracción, caracteriza a las decoraciones; la riqueza táctil de la materia exalta su variedad. Simple y sofisticado, este proyecto está en equilibrio entre la artesanía y la modernidad, entre el arte y el diseño, a través de un hilo cromático delicado y cautivador.

# **mixable colors**

**4 toni neutri in contrasto  
con 4 colori tutti  
coordinati tra di loro.**

**4 neutral shades in contrast  
with 4 colours, all coordinated  
with each other.**

**4 tons neutres en contraste  
avec 4 couleurs toutes assorties.**

**4 neutrale Farbtöne im Kontrast  
zu 4 Farben, die alle aufeinander  
abgestimmt sind.**

**4 tonos neutros en contraste  
con 4 colores, todos  
coordinados entre si.**

# **choose your mix**

**Casamood  
presenta 8 mix di  
riferimento che  
comprendono  
colori e superfici.**

**Casamood has 8 standard  
mixes that include  
colours and surfaces.**

**Casamood présente  
8 associations de référence  
mélant couleurs et surfaces.**

**Casamood präsentiert  
8 Bezugsmixe, welche Farben  
und Oberflächen umfassen.**

**Casamood presenta 8  
combinaciones de referencia,  
que incluyen colores y superficies.**



**lo stile libero  
del design**  
mixed surfaces  
bark/glass  
p 8\_17



**il giardino  
dei segreti**  
mixed surfaces  
brushed/honed  
p 18\_27



**progetto  
evoluto**  
mixed surfaces  
honed/brushed  
p 28\_41



**puro  
spazio**  
mixed surfaces  
crusted/honed/glass  
p 42\_55



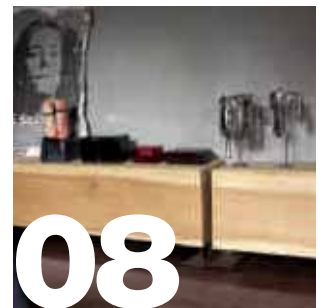
**appunti  
di stile**  
mixed surfaces  
honed/bark/crusted  
p 56\_71



**il profumo  
dei ricordi**  
mixed surfaces  
bark/glass  
p 72\_79



**art&  
fashion**  
mixed surfaces  
brushed/bark  
p 80\_89



**spazi  
ritrovati**  
mixed surfaces  
bark/glass  
p 90\_103



# 01 lo stile libero del design

**Ampi spazi e colori leggeri,  
tanta luce e arredi  
ricercati che trovano un posto  
privilegiato come se fossero  
esposti in una galleria  
privata vissuta  
quotidianamente.**



**"materia" project 01 bark . 15x120 57/8"x471/8" . 20x120 77/8"x471/8"**



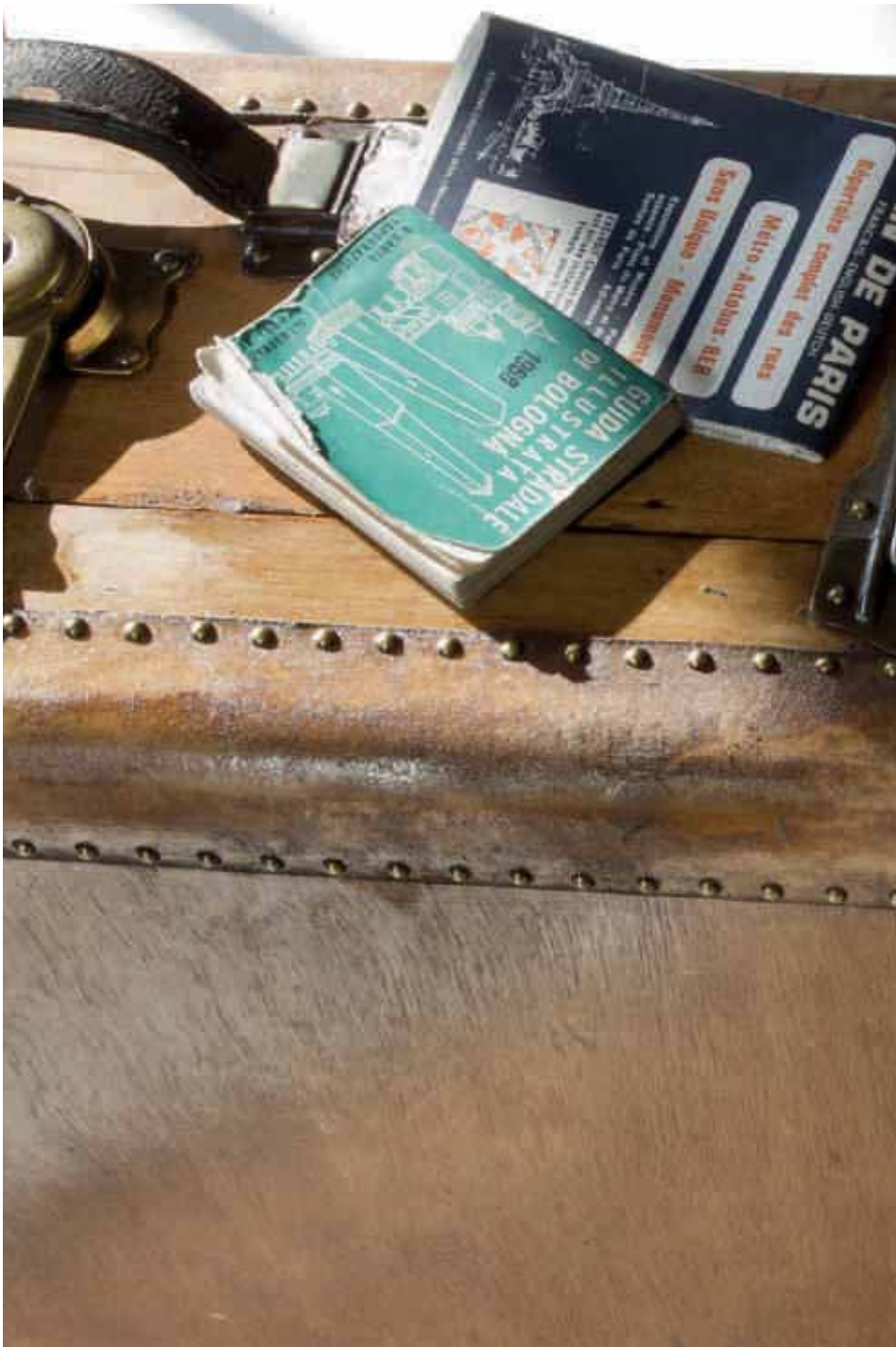
**"materia" project 01 bark . 15x120 57/8"x471/8"**



**“materia” project** 01 bark . 15x120 57/8"x471/8" . 20x120 77/8"x471/8"







**Ample spaces and light colours, lots of light and popular furnishings that find a privileged place as if on display in a private gallery for daily use.**

**De vastes espaces et des couleurs légères, beaucoup de lumière, un mobilier recherché qui trouve une place privilégiée, comme dans une galerie privée vécue au quotidien.**



**“materia” project 01 bark . 15x120 5<sup>7</sup>/<sub>8</sub>”x47<sup>1</sup>/<sub>8</sub>” . 20x120 7<sup>7</sup>/<sub>8</sub>”x47<sup>1</sup>/<sub>8</sub>”**

**Geräumige Flächen  
und leichte Farben,  
viel Licht und auserlesene  
Einrichtungsgegenstände,  
die einen privilegierten  
Platz finden - wie Exponate  
in einer tagtäglich zu  
erlebenden Privatgalerie.**

**Amplios espacios y colores  
ligeros, mucha luz y  
refinados elementos  
decorativos que  
encuentran un lugar  
privilegiado, como si  
estuvieran expuestos en  
una galería privada, vivida  
cotidianamente.**



**“materia” project 01 glass . 22,5x25 87/8”x97/8”**



**"materia" project** 01 glass . 22,5x25 8<sup>7/8"</sup>x9<sup>7/8"</sup> . 01 bark . 15x120 5<sup>7/8"</sup>x47<sup>1/8"</sup> . 20x120 7<sup>7/8"</sup>x47<sup>1/8"</sup>





**“materia” project** 01 bark . 15x120 57/8"x47 1/8" . 20x120 77/8"x47 1/8"



**“materia” project** 01 bark . 15x120 5<sup>7</sup>/<sub>8</sub>”x47<sup>1</sup>/<sub>8</sub>” . 20x120 7<sup>7</sup>/<sub>8</sub>”x47<sup>1</sup>/<sub>8</sub>”

# 02 il giardino dei segreti

Angoli nascosti, intimi e preziosi in cui riposarsi dedicandosi a se stessi e ai propri pensieri, cullati dai riflessi del sole che gioca con le superfici donandole un aspetto sempre nuovo.

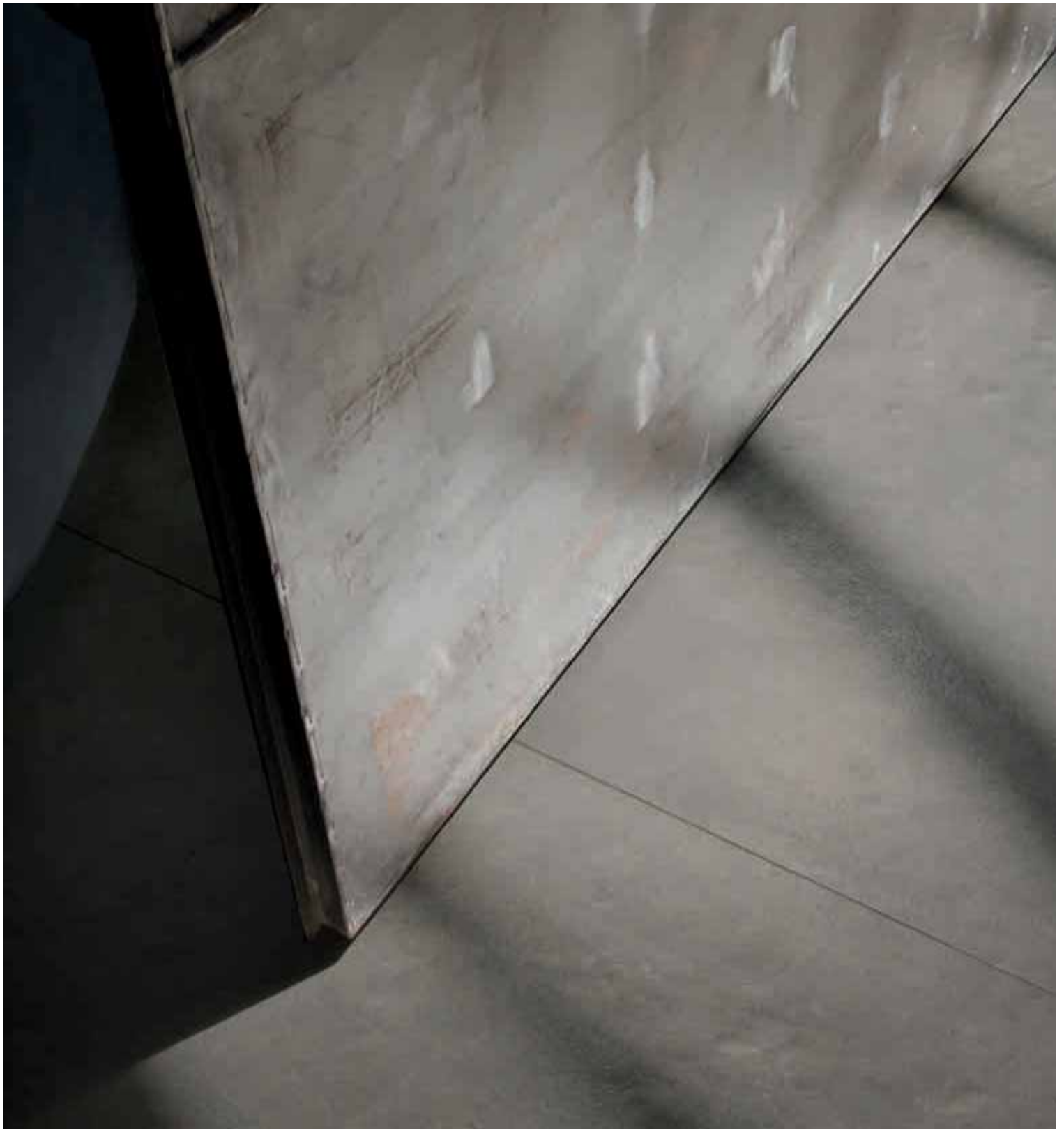


“materia” project 02 brushed , 20x80 77/8”x31 1/2”



“materia” project 02 brushed . 20x80 77/8"x31 1/2"





**"materia" project 02** honed . 80x80 31<sup>1</sup>/<sub>2</sub>"x31<sup>1</sup>/<sub>2</sub>"

**Hidden, intimate and precious corners where you can rest, dedicating yourself to yourself and your own thoughts, coddled by the reflected sunlight that plays over the surfaces, constantly giving them a new look.**

**Des angles cachés, intimes et précieux, lieux du repos et de la réflexion ; le bercement des reflets du soleil qui joue avec les surfaces, leur prêtant un aspect toujours changeant.**







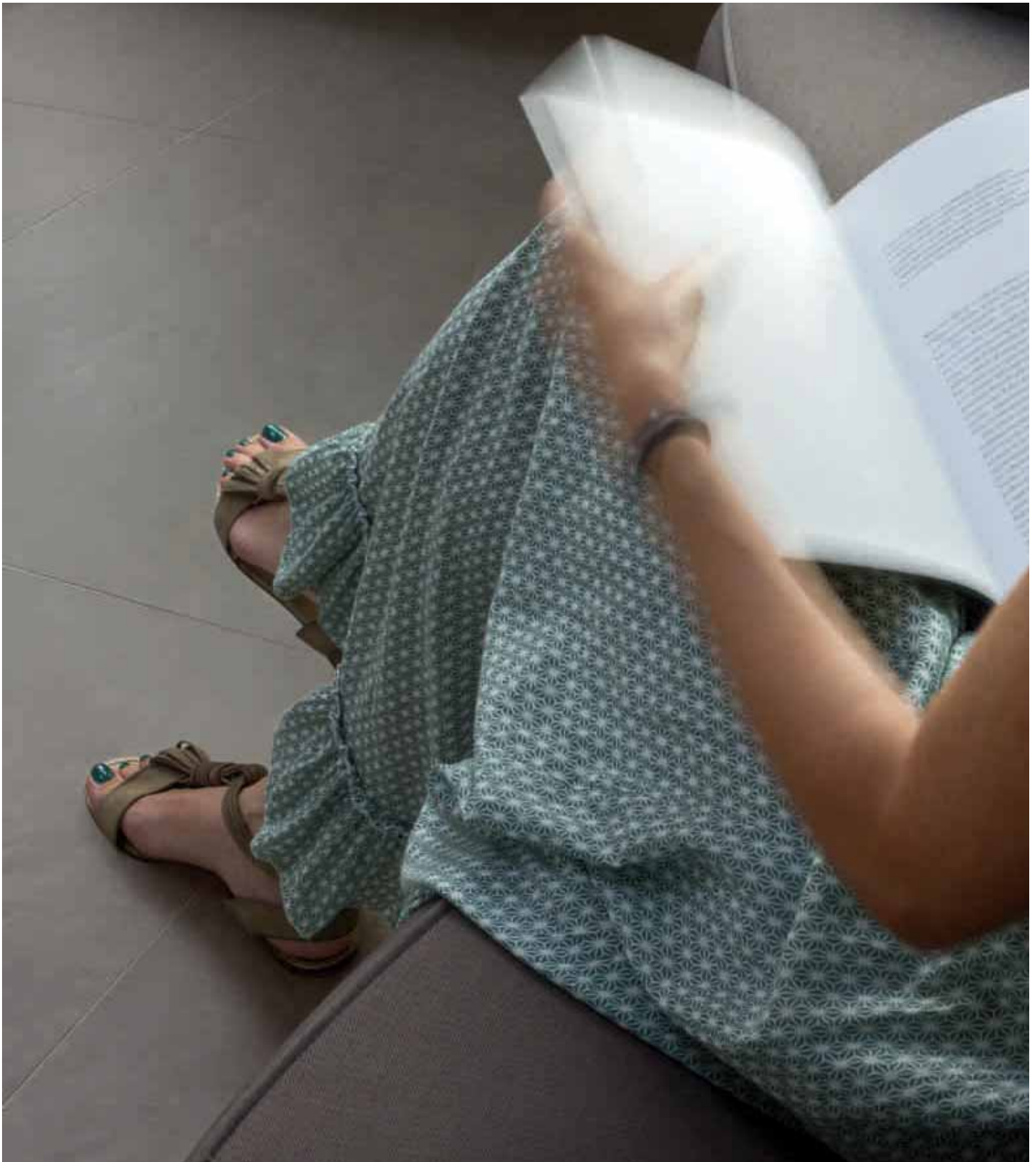


**Versteckte, intime und wertvolle Winkel, in denen man sich ausruhen und sich selbst und seinen Gedanken widmen kann, sich vom Widerschein der Sonne wiegen lässt, die mit den Oberflächen spielt und ihnen ein stets neues Aussehen verleiht.**

**Rincones ocultos, íntimos y preciados en los que reposar, dedicado a uno mismo y a sus pensamientos, mientras el sol juega sobre las superficies, dándoles un aspecto siempre nuevo.**

**"materia" project 02 honed . 80x80 31<sup>1</sup>/<sub>2</sub>"x31<sup>1</sup>/<sub>2</sub>"**





**"materia" project 02** honed , 80x80 31<sup>1</sup>/<sub>2</sub>"x31<sup>1</sup>/<sub>2</sub>"

# 02 honed



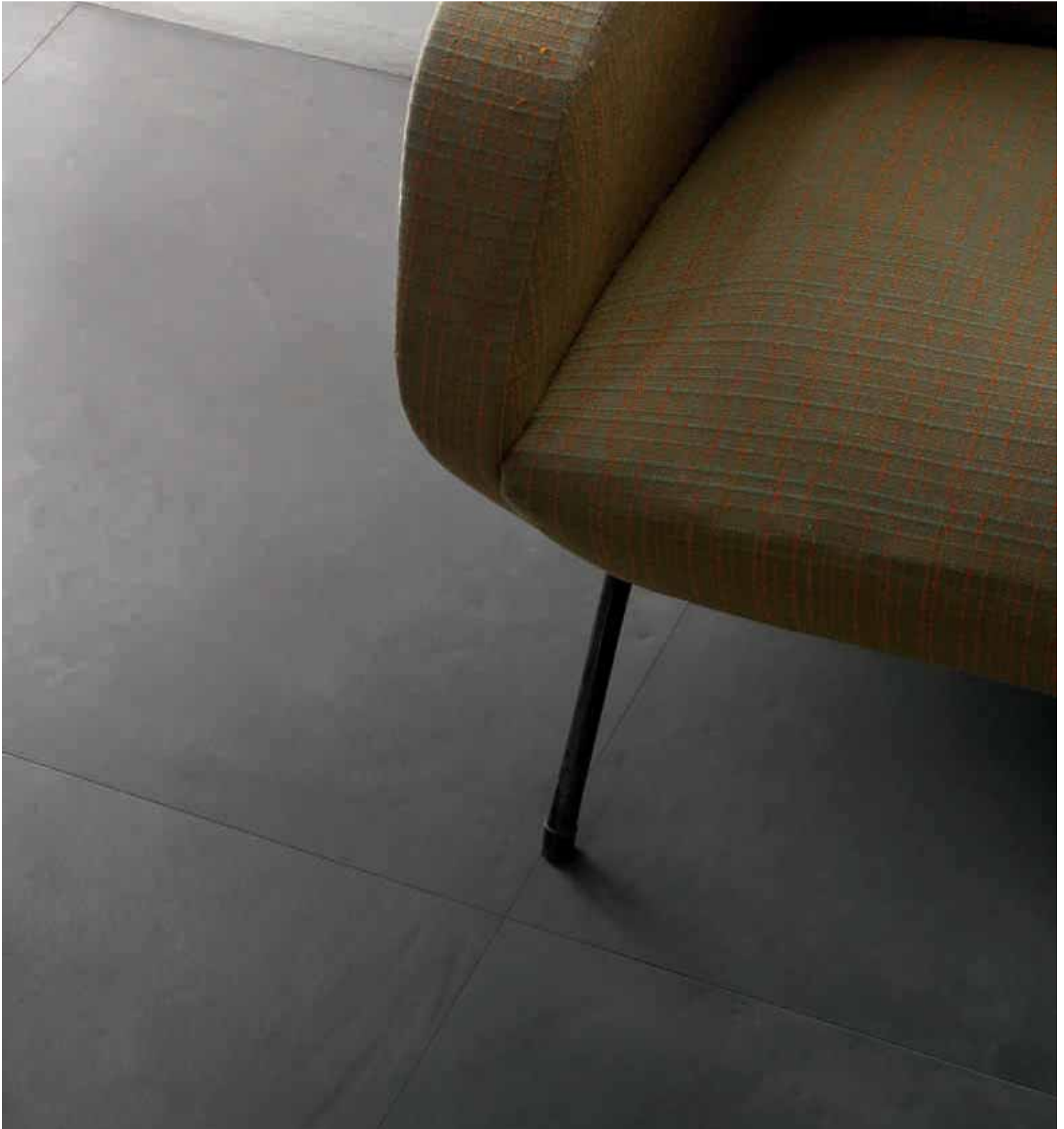
**"materia" project 02 honed . 80x80 31<sup>1</sup>/<sub>2</sub>"x31<sup>1</sup>/<sub>2</sub>"**

# 03 progetto evoluto

**L'ufficio come la casa, comodo e accogliente, un luogo dinamico dove trascorrere la giornata e dedicarsi al lavoro con uno spirito positivo e contemporaneo.**



**"materia" project 03 honed . 80x80 31<sup>1</sup>/<sub>2</sub>"x31<sup>1</sup>/<sub>2</sub>"**



**"materia" project** 03 honed . 80x80 31<sup>1</sup>/<sub>2</sub>"x31<sup>1</sup>/<sub>2</sub>"



“materia” project Componed . 80x80 31 1/2"x31 1/2"



**"materia" project** 03 honed . 80x80 31<sup>1</sup>/<sub>2</sub>"x31<sup>1</sup>/<sub>2</sub>"

**The office like home, comfortable and welcoming, a dynamic place where you can spend the day dedicated to work with a positive and contemporary spirit.**



**Au bureau comme à la maison, dans un espace pratique et accueillant, un lieu dynamique où passer la journée et travailler dans un esprit positif et contemporain.**

**Das Büro ist wie das Zuhause, gemütlich und behaglich; ein dynamische Ort, in dem man den Tag verbringt und sich der Arbeit widmet, in einem positiven und zeitgenössischen Gemütszustand.**

**Una oficina cómoda y acogedora como el hogar, un lugar dinámico en el que transcurrir la jornada y dedicarse al trabajo con un espíritu positivo y contemporáneo.**



**"materia" project 03 honed , 80x80 31 1/2"x31 1/2"**



**"materia" project 03** honed . 80x80 31<sup>1</sup>/<sub>2</sub>"x31<sup>1</sup>/<sub>2</sub>"



**"materia" project** 03 honed . 80x80 31<sup>1</sup>/<sub>2</sub>"x31<sup>1</sup>/<sub>2</sub>"

# DESIGNER





**“materia” project** 01 brushed . 20x80 77/8"x311/2" . 02 honed . 20x80 77/8"x311/2" . 03 brushed . 20x80 77/8"x311/2" . 04 honed . 20x80 77/8"x311/2"



**“materia” project** 01 brushed , 20x80 77/8"x311/2" , 02 honed , 20x80 77/8"x311/2" , 03 brushed , 20x80 77/8"x311/2" , 04 honed , 20x80 77/8"x311/2"





“materia” project 01 brushed , 20x80 77/8"x311/2" . 02 honed , 20x80 77/8"x311/2" . 03 brushed , 20x80 77/8"x311/2" . 04 honed , 20x80 77/8"x311/2"





**“materia” project** 01 brushed , 20x80 77/8"x311/2" . 02 honed , 20x80 77/8"x311/2" . 03 brushed , 20x80 77/8"x311/2" , 04 honed , 20x80 77/8"x311/2"



**"materia" project** 01 brushed, 20x80 7/8"x31 1/2", 02 honed, 20x80 7/8"x31 1/2"  
03 brushed, 20x80 7/8"x31 1/2", 04 honed, 20x80 7/8"x31 1/2"

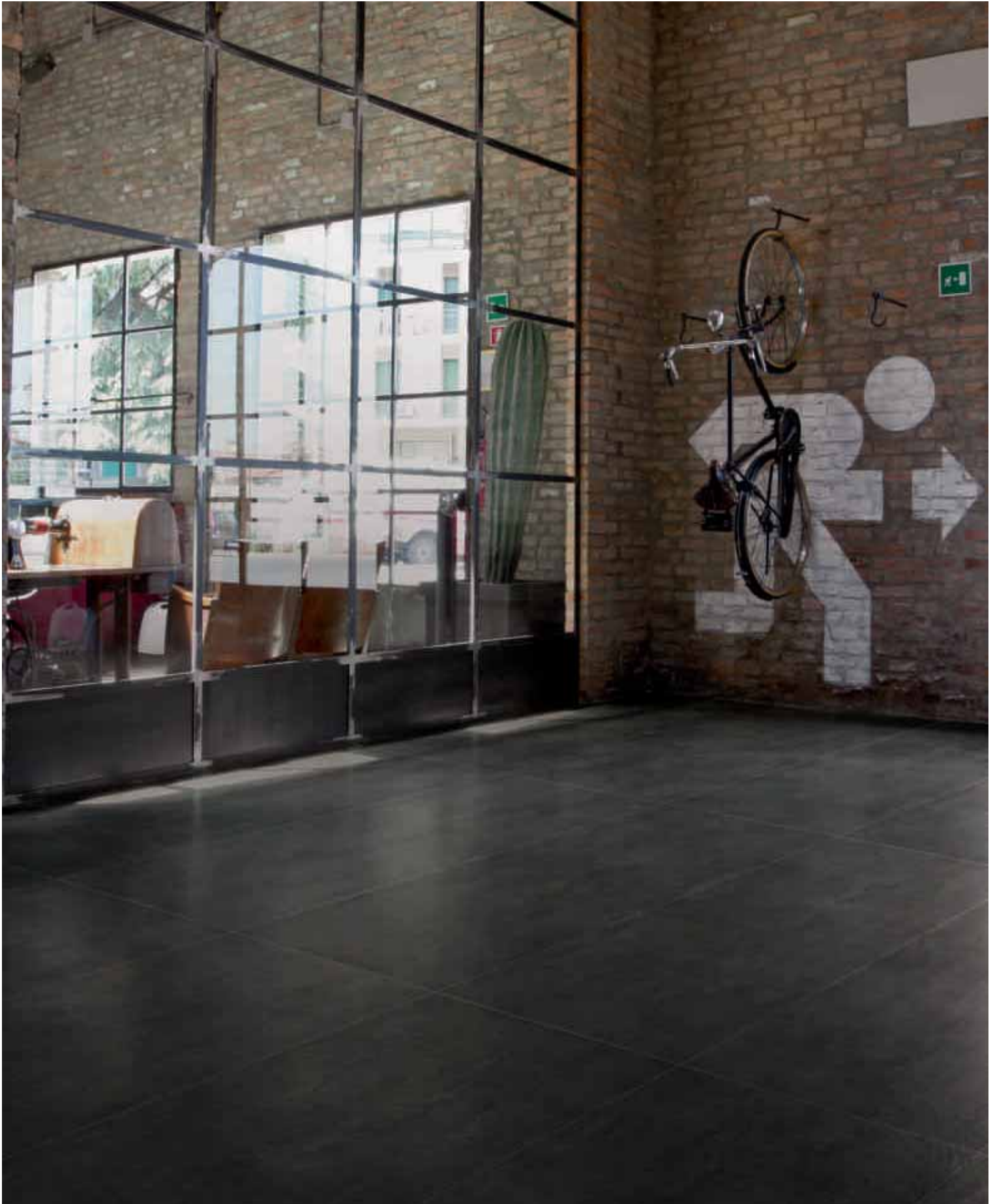


# 04 puro spazio

**Colori scuri e metropolitani, oggetti vintage rivisitati e utilizzati in modo nuovo, un recupero industriale preciso e accurato in cui gli spazi si inseguono con fluidità in attesa di essere trasformati continuamente.**

**"materia" project 04** crusted . 80x180 31<sup>1/2</sup>"x70<sup>3/4</sup>"





**"materia" project 04** crusted . 80x180 31<sup>1</sup>/<sub>2</sub>"x70<sup>3</sup>/<sub>4</sub>"



**Dark and metropolitan colours, vintage articles revisited and used in a new way, a precise and accurate industrial recovery where spaces chase one another fluidly, awaiting continuous transformation.**

**Des couleurs foncées, métropolitaines, des objets vintage revisités et détournés, une récupération industrielle soignée et ciblée dans laquelle les espaces se succèdent avec fluidité dans l'attente d'une transformation continue.**





**"materia" project** 04 honed . 80x80 31<sup>1</sup>/<sub>2</sub>"x31<sup>1</sup>/<sub>2</sub>"



**Dunkle und weltstädtische Farben, neu gedeutete und auf neuartige Weise zum Einsatz kommende Vintage-Objekte, ein präzise und akkurate Industriesanierung, in der die Räume sich auf fluide Weise gegenseitig verfolgen, während sie auf ihre kontinuierliche Veränderung warten.**



**"materia" project** 04 honed . 80x80 31<sup>1</sup>/<sub>2</sub>"x31<sup>1</sup>/<sub>2</sub>"



**“materia” project** 04 crusted . 20x120 77/8"x47 1/8" . 60x120 23 5/8"x47 1/8"



"materia" project 04 honed . 80x80 31<sup>1</sup>/<sub>2</sub>"x31<sup>1</sup>/<sub>2</sub>"





**"materia" project** 04 honed . 80x80 31<sup>1</sup>/<sub>2</sub>"x31<sup>1</sup>/<sub>2</sub>"



“materia” project 01 decoro . 20x80 77/8"x31 1/2" . 04 crusted . 40x80 15 3/4"x31 1/2"

**Colores oscuros y metropolitanos, objetos vintage reelaborados y utilizados en formas nuevas; una recuperación industrial precisa y cuidadosa en la que los espacios se comunican con fluidez, a la espera de ser transformados continuamente.**

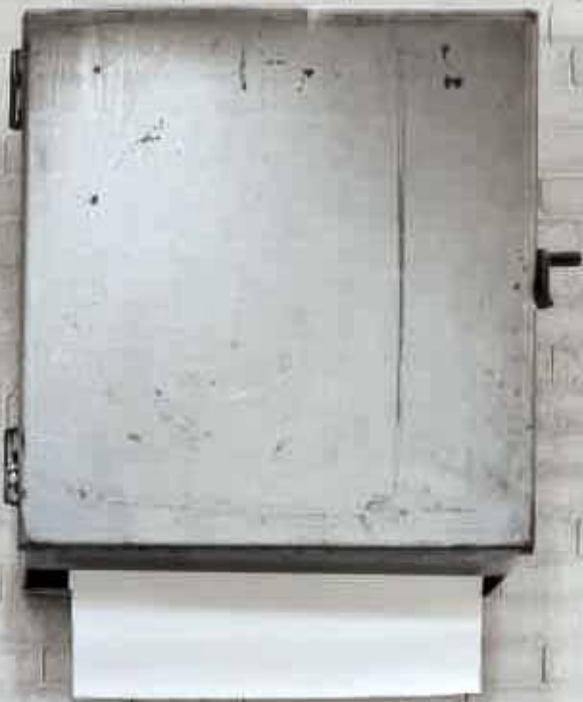


**"materia" project** 01 glass . 22,5x25 8<sup>7/8</sup>"x9<sup>7/8</sup>"  
04 crusted . 40x80 15<sup>3/4</sup>"x31<sup>1/2</sup>"



01 glass  
02  
03  
04  
05  
06  
07  
08  
09  
10  
11  
12  
13  
14  
15  
16  
17  
18  
19  
20  
21  
22  
23  
24  
25  
26  
27  
28  
29  
30  
31  
32  
33  
34  
35  
36  
37  
38  
39  
40  
41  
42  
43  
44  
45  
46  
47  
48  
49  
50  
51  
52  
53  
54  
55  
56  
57  
58  
59  
60  
61  
62  
63  
64  
65  
66  
67  
68  
69  
70  
71  
72  
73  
74  
75  
76  
77  
78  
79  
80  
81  
82  
83  
84  
85  
86  
87  
88  
89  
90  
91  
92  
93  
94  
95  
96  
97  
98  
99  
100







# 05 appunti di stile

Ogni dettaglio è perfetto,  
posizionato nel punto giusto;  
tutto racconta una storia  
precisa costellata di scelte  
forti e personali che  
caratterizzano gli ambienti  
rendendoli unici e accattivanti.



“materia” project 01 glass , 22,5x25 87/8”x97/8”



**"materia" project 05** honed . 60x60 23<sup>5/8"</sup>x23<sup>5/8"</sup> . 01 glass . 22,5x25 8<sup>7/8"</sup>x9<sup>7/8"</sup>



**“materia” project** 05 honed . 60x60 23<sup>5</sup>/<sub>8</sub>"x23<sup>5</sup>/<sub>8</sub>" . 01 glass . 22,5x25 8<sup>7</sup>/<sub>8</sub>"x9<sup>7</sup>/<sub>8</sub>"

**Every detail is perfect,  
positioned in  
the right place;  
everything tells a  
specific story dotted  
with strong and  
personal choices  
that characterise the  
environment,  
making it unique  
and attractive.**

**Chaque détail,  
placé au bon endroit,  
est parfait ;  
le tout raconte  
une histoire précise,  
d'où émergent des  
choix forts et  
personnels qui  
confèrent leur identité  
aux espaces en les  
rendant uniques  
et captivants.**



**"materia" project 05 honed . 60x60 23<sup>5</sup>/<sub>8</sub>"x23<sup>5</sup>/<sub>8</sub>"**

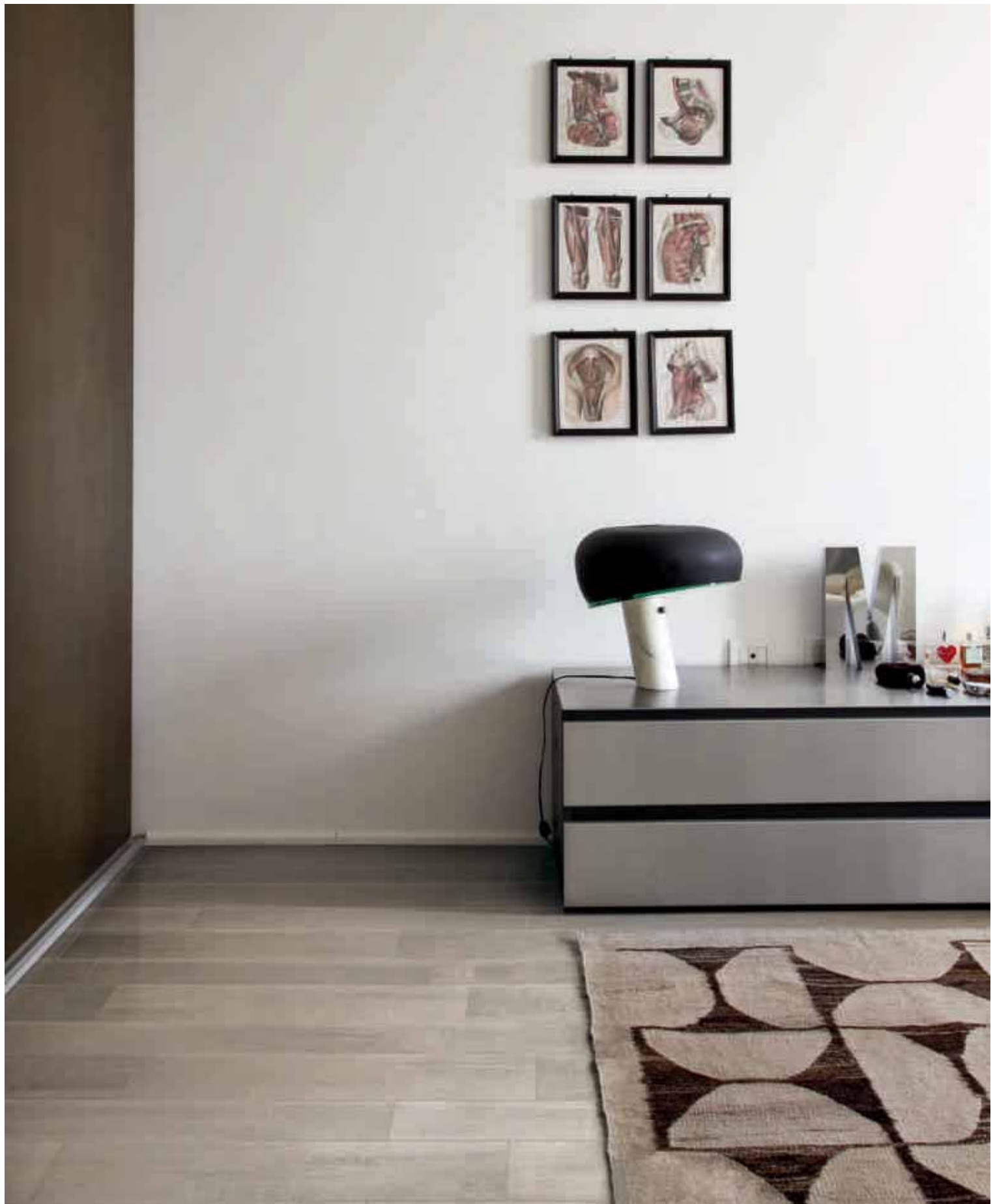


**“materia” project** 05 honed . 60x60 23<sup>5</sup>/<sub>8</sub>”x23<sup>5</sup>/<sub>8</sub>”



**"materia" project 05 honed . 80x80 31<sup>1</sup>/<sub>2</sub>"x31<sup>1</sup>/<sub>2</sub>"**





**"materia" project** 05 bark . 15x120 57/8"x47 1/8" . 20x120 77/8"x47 1/8"



**Jedes Detail ist perfekt, an der richtigen Stelle positioniert; alles erzählt eine präzise Geschichte, die mit starken und persönlichen Lösungen übersät ist, welche die Räume kennzeichnen und mit einem einzigartigen und verführerischen Flair umhüllen.**

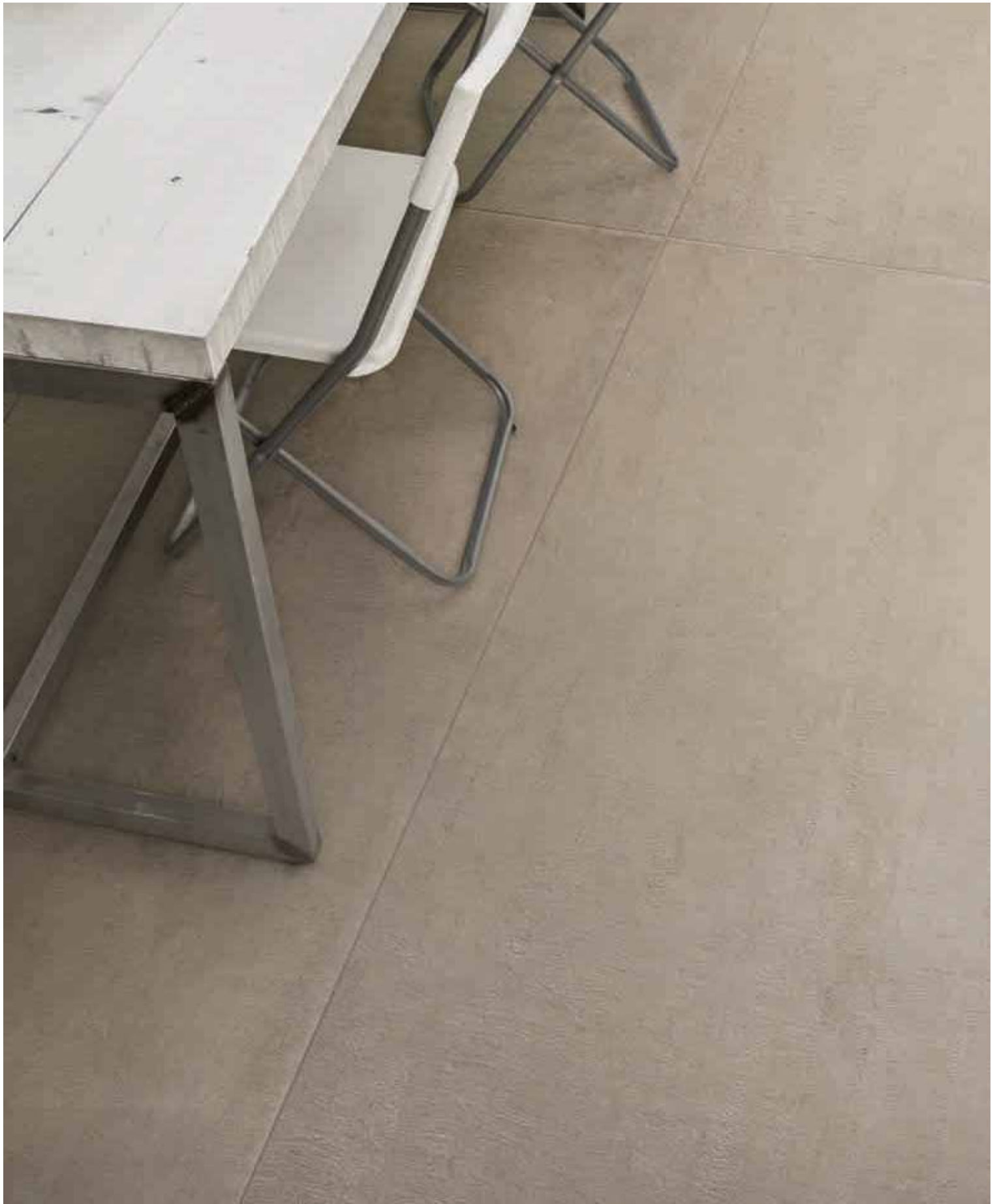
**Cada detalle es perfecto, colocado en el punto exacto; todo nos narra una historia precisa, llena de elecciones fuertes y personales que caracterizan a los ambientes, volviéndolos únicos y cautivadores.**







**“materia” project** 05 crusted . 60x120 23<sup>5/8</sup>”x47<sup>1/8</sup>”





**"materia" project** 05 decor . 20x80 77/8"x31 1/2" . 01 crusted . 40x80 15 3/4"x31 1/2" . 01 crusted . 80x180 31 1/2"x70 3/4"  
05 honed . 20x80 77/8"x31 1/2" . 05 brushed . 20x80 77/8"x31 1/2"



**“materia” project** 05 decor . 20x80 7/8"x31 1/2" . 01 crusted . 40x80 15 3/4"x31 1/2" . 01 crusted . 80x180 31 1/2"x70 3/4"  
05 honed . 20x80 7/8"x31 1/2" . 05 brushed . 20x80 7/8"x31 1/2"



**"materia" project** 05 decor . 20x80 . 01 crusted . 40x80 15<sup>3/4</sup>"x31<sup>1/2</sup>"



**“materia” project** 05 decor . 20x80 7<sup>7</sup>/<sub>8</sub>"x31<sup>1</sup>/<sub>2</sub>" . 01 crusted . 40x80 15<sup>3</sup>/<sub>4</sub>"x31<sup>1</sup>/<sub>2</sub>"



# 06 il profumo dei ricordi

**Il vecchio baule dei nonni  
e il tavolo di design,  
la moto che hai desiderato  
per tanto tempo trovata  
in un mercatino, la barchetta  
con cui giocavi da piccolo,  
tutti insieme a ricordarti  
affetti e passioni.**



**"materia" project 06 bark . 20x120 77/8"x47 1/8"**



**"materia" project** 06 bark . 20x120 77/8" x 47 1/8"





**Your grandparents' old trunk and the drawing table, the motorbike you had always wanted and finally found at a market, the toy boat you played with as a child, all together to remind you of affections and passions.**

**La vieille malle des grands-parents et la table design, la moto tant attendue dénichée dans une brocante, le petit bateau avec lequel vous jouiez étant petit... autant de réceptacles des passions et des sensations d'autrefois.**

**Der alte Kabinenkoffer der Großeltern und der Designtisch; das Motorrad, das Sie sich lange gewünscht und auf einem Flohmarkt gefunden haben, und das Schiffchen, mit dem Sie als Kind spielten: alles erweckt Liebe und Leidenschaft.**

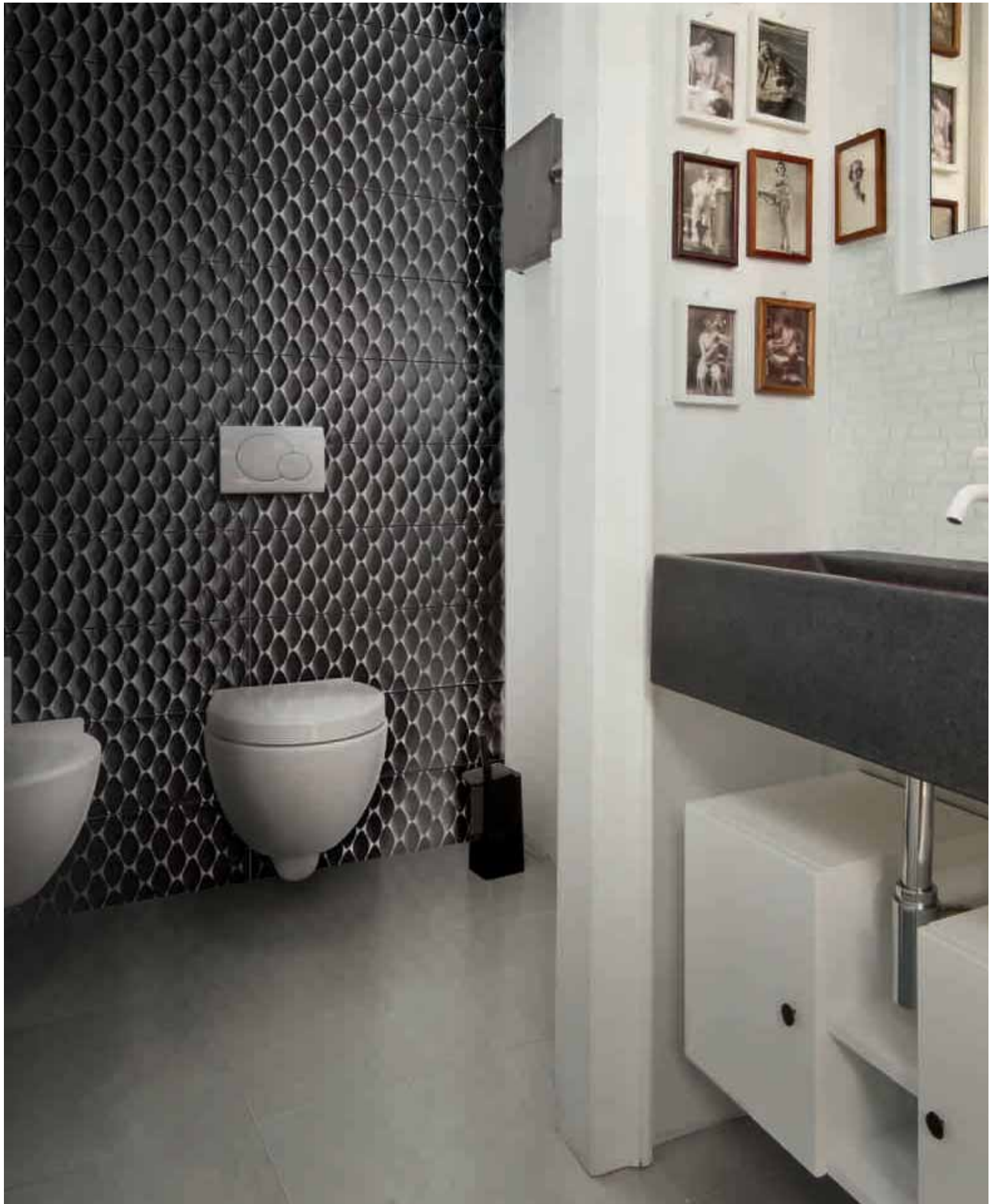
**El viejo baúl de los abuelos, la mesa de dibujo, la motocicleta que deseaste durante tanto tiempo, encontrada en un mercadillo, el bote con que el que jugabas de pequeño: un conjunto de objetos que te recuerdan afectos y pasiones.**



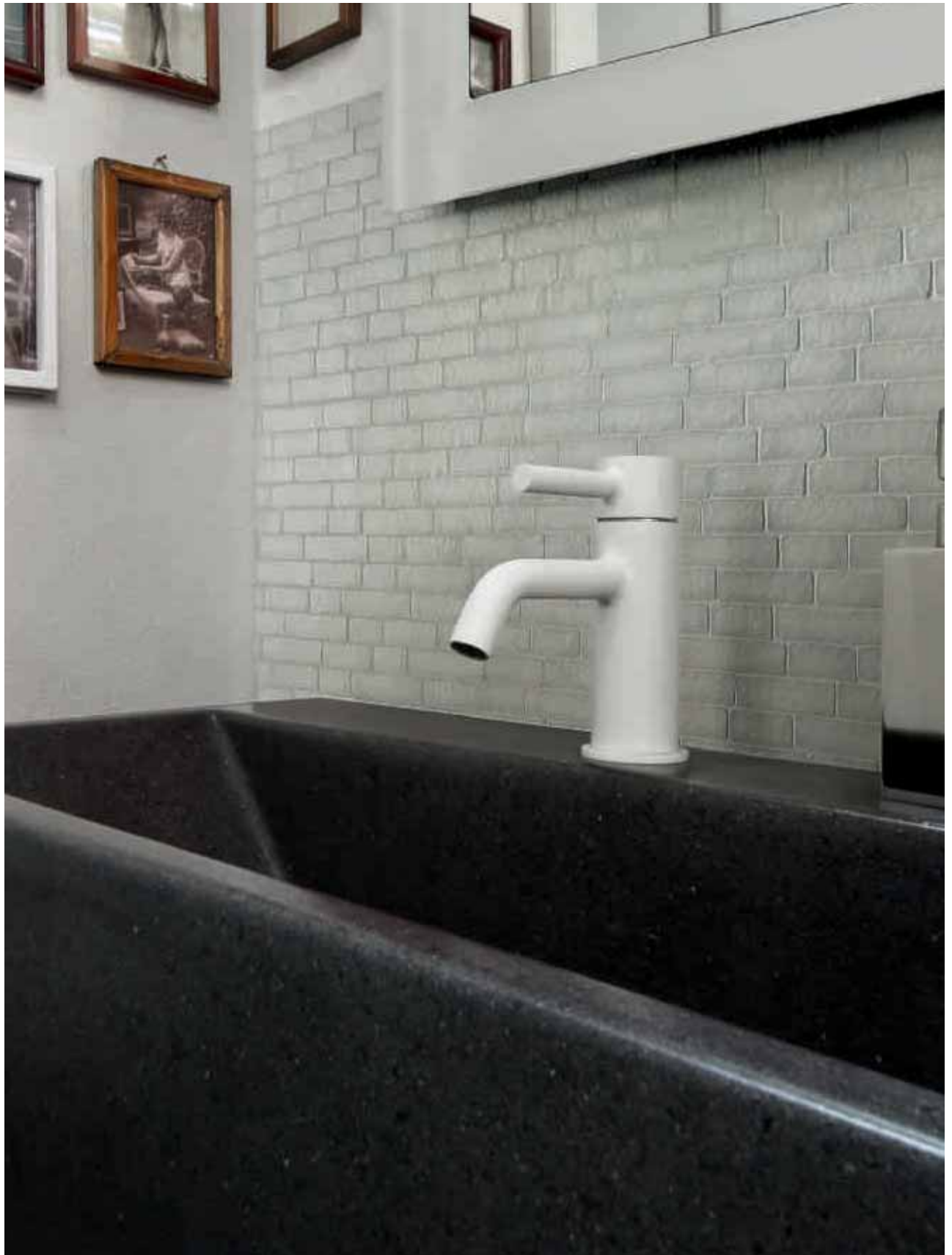
**"materia" project 06 bark . 20x120 77/8"x471/8"**



**"materia" project 06 bark . 20x120 77/8"x471/8"**



**"materia" project** 04 decor . 20x80 77/8"x31 1/2" . 06 glass . 22,5x25 87/8"x97/8" . 06 honed . 60x60 23 5/8"x23 5/8"



**"materia" project** 06 glass . 22,5x25 8<sup>7/8</sup>"x9<sup>7/8</sup>"



# 07

## art & fashion

**Un' architettura semplice,  
in cui disseminare il proprio  
segno artistico,  
nelle tele e negli oggetti,  
nei colori e nell'arredo,  
per un risultato irripetibile,  
libero di immaginare  
il proprio stile.**



**"materia" project 07 brushed . 20x80 7 1/8"x31 1/2". 80x80 31 1/2"x31 1/2"**



**"materia" project 07 brushed . 20x80 77/8"x311/2". 80x80 311/2"x311/2"**



“materia” project 07 brushed . 20x80 77/8"x31 1/2" . 80x80 31 1/2"x31 1/2"





**"materia" project 07 brushed** . 20x80  $7\frac{1}{8}'' \times 31\frac{1}{2}''$  , 80x80  $31\frac{1}{2}'' \times 31\frac{1}{2}''$



“materia” project 07 brushed . 20x80 77/8"x31 1/2", 80x80 31 1/2"x31 1/2"

**Simple architecture where you can leave your artistic mark, on canvases and in articles, in colours and furnishing, for a unique result, free to imagine your own style.**

**Une architecture simple dans laquelle laisser sa propre empreinte artistique, dans les toiles et les objets, les couleurs et le mobilier. Libre d'imaginer son propre style, pour un résultat unique.**



**"materia" project 07 bark . 20x120 77/8"x47 1/8"**



**“materia” project 07 bark . 20x120 77/8”x47 1/8”**





**"materia" project 07 bark . 20x120 77/8"x47 1/8"**



**Eine einfache Architektur, in der man sein eigenes künstlerisches Zeichen verstreuen kann, auf den Leinwänden und Gegenständen, in den Farben und Einrichtungsobjekten, für ein unwiederholbares Resultat mit der Freiheit, sich den persönlichen Stil ohne Hemmungen vorzustellen.**

**Una arquitectura simple en la cual dejar tu propia huella artística, en las telas y en los objetos, en los colores y en la decoración, para obtener un resultado irrepetible, libre de imaginar un estilo propio.**



# 08 spazi ritrovati

**Il colore è protagonista dell'ambiente, un gioco equilibrato di pieni e vuoti si alterna creando scenografie eleganti e inconsuete, emozione e memoria si confondono.**

**"materia" project 08 bark . 15x120 5<sup>7</sup>/<sub>8</sub>"x47<sup>1</sup>/<sub>8</sub>" . 20x120 7<sup>7</sup>/<sub>8</sub>"x47<sup>1</sup>/<sub>8</sub>"**



**"materia" project 08 bark . 15x120 57/8"x471/8" . 20x120 77/8"x471/8"**



**“materia” project 08 bark . 15x120 . 57/8"x471/8" . 20x120 77/8"x471/8"**



# 08 honed



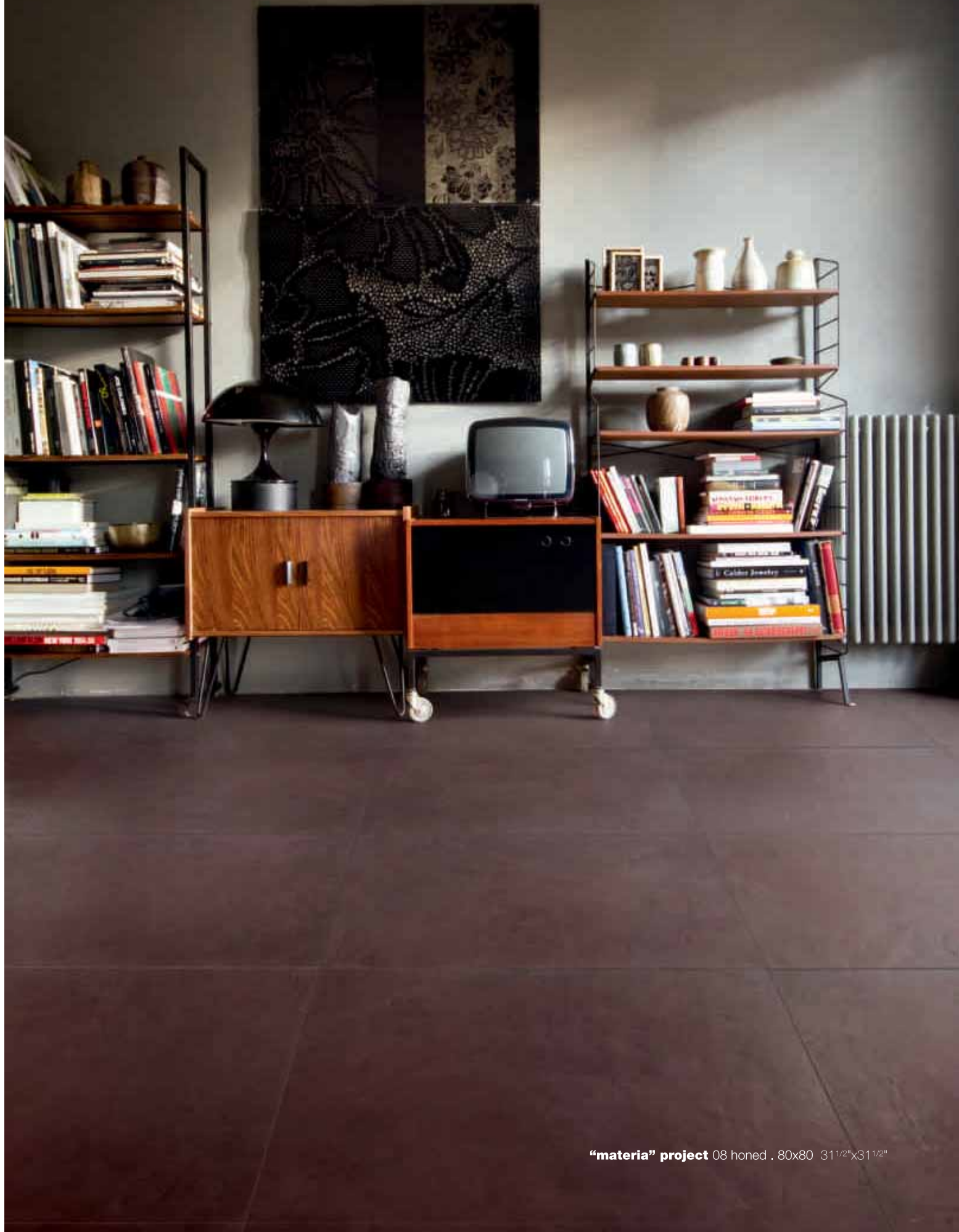
"materia" project 08 honed . 80x80 31 1/2"x31 1/2"



**"materia" project** 08 honed . 80x80 31 1/2"x31 1/2"







**Colour is the key player in the environment, a balanced play of full and empty spaces alternate, creating elegant and unusual settings, emotions and memories merge.**

**La couleur fait vibrer l'espace dans une savante alternance de vides et de pleins, créant des décors élégants et insolites, où mémoire et émotion se fondent.**



**"materia" project 08 glass . 22,5x25 8/10"x9/10"**



**gost**



"materia" project 08 glass / 22,5x25 87/8"x97/8"

**Die Farbe ist der Hauptakteur des Raums, ein ausgewogenes Spiel von Fülle und Leere alterniert und erzielt elegante und ungewöhnliche Szenerien, wobei sich die Gefühle und Erinnerungen vermischen.**

**El color es protagonista del ambiente, en un equilibrado juego de cuerpos y espacios que se alterna para crear escenografías elegantes e insólitas; la emoción se combina con la memoria.**







**"materia" project triangle . 02 brushed . 03 honed . 80x80 31<sup>1</sup>/<sub>2</sub>"x31<sup>1</sup>/<sub>2</sub>"**



**“materia” project** triangle . 02 brushed . 03 honed . 80x80 31<sup>1</sup>/<sub>2</sub>”x31<sup>1</sup>/<sub>2</sub>”



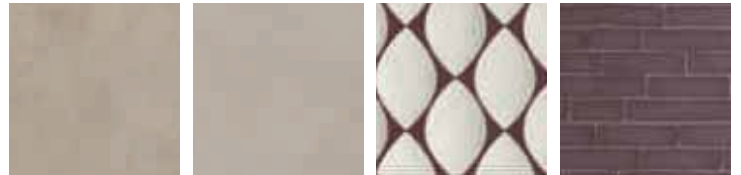
# alternative mix

## 01/06



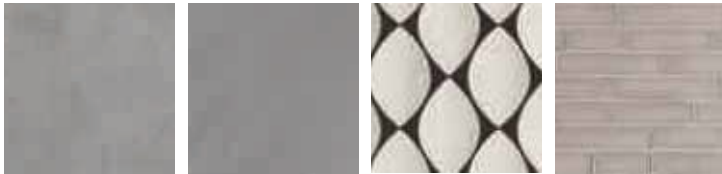
01 bark 01 crusted 06 decor 06 glass

## 05/08



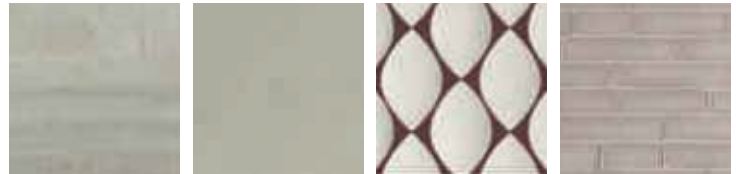
05 brushed 05 honed 05 decor 08 glass

## 02/01/05



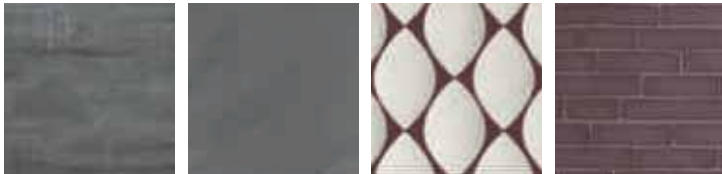
02 brushed 02 honed 01 decor 05 glass

## 06/05



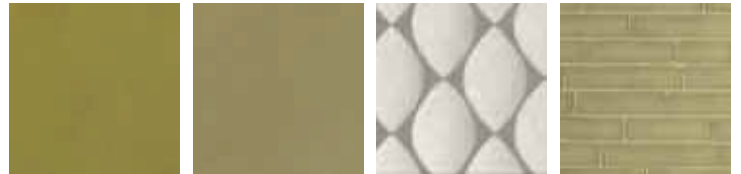
06 bark 06 honed 05 decor 05 glass

## 03/05/08



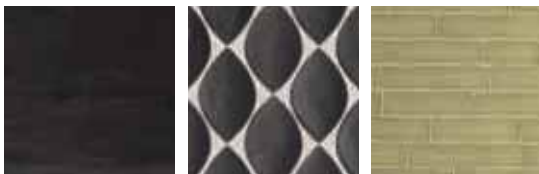
03 bark 03 honed 05 decor 08 glass

## 07/06



07 brushed 07 honed 06 decor 07 glass

## 04/07



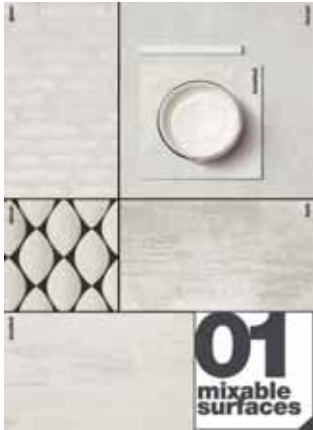
04 crusted 04 decor 07 glass

## 08/04



08 bark 08 honed 08 decor 04 glass

# moodboard "materia" project mixable surfaces



glass



honed



brushed

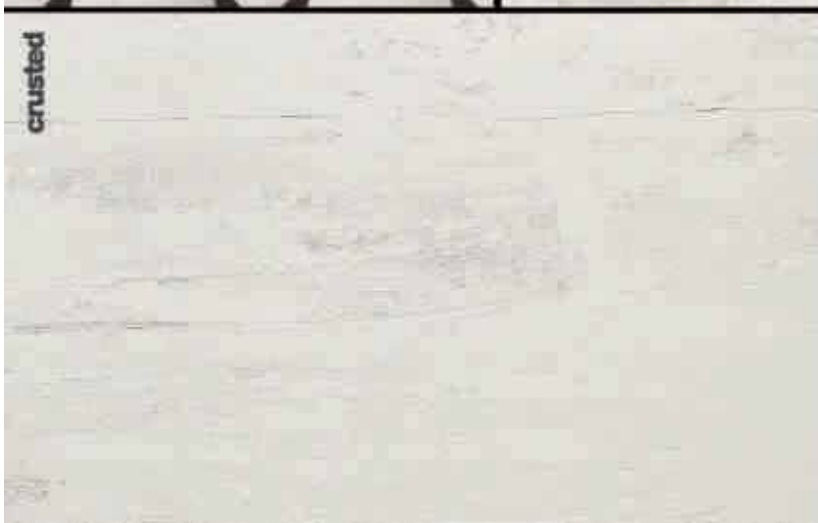
decor



bark



crusted



# 01

**mixable  
surfaces**



glass



brushed

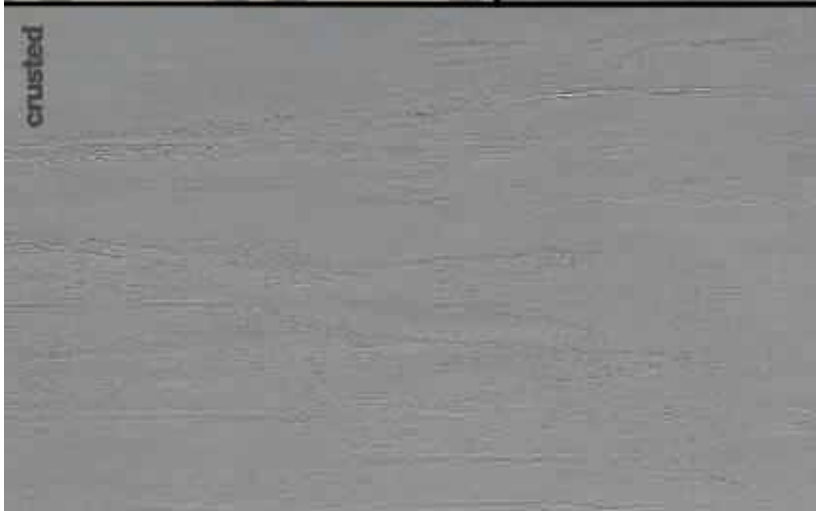
honed



decor



bark



crusted

**02**  
**mixable**  
**surfaces**

glass



honed



brushed

decor



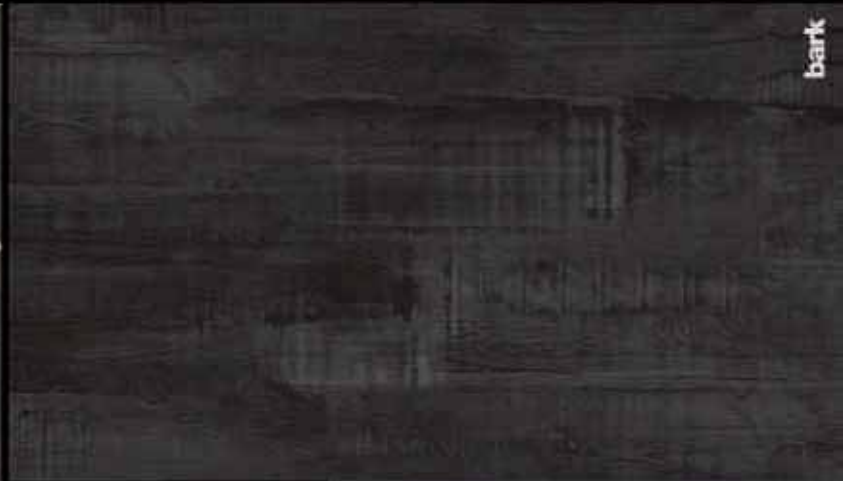
bark



crusted



**03**  
**mixable**  
**surfaces**



# 04

**mixable  
surfaces**

glass

decor

crusted

brushed

honed

bark



glass



brushed

honed



decor



bark



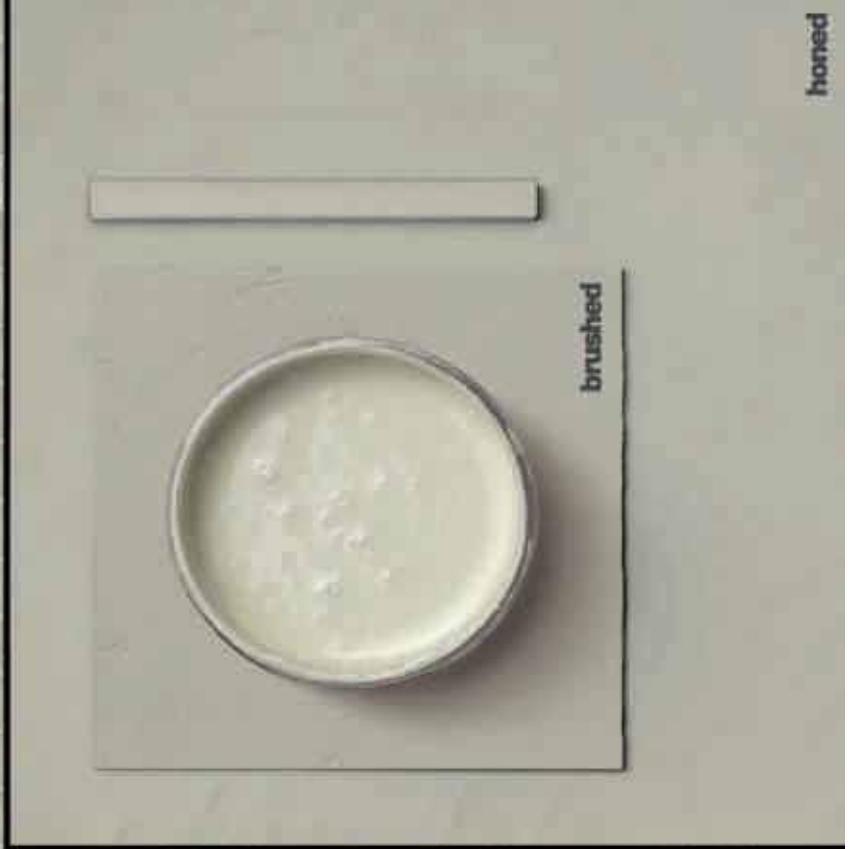
crusted

# 05

**mixable  
surfaces**



glass

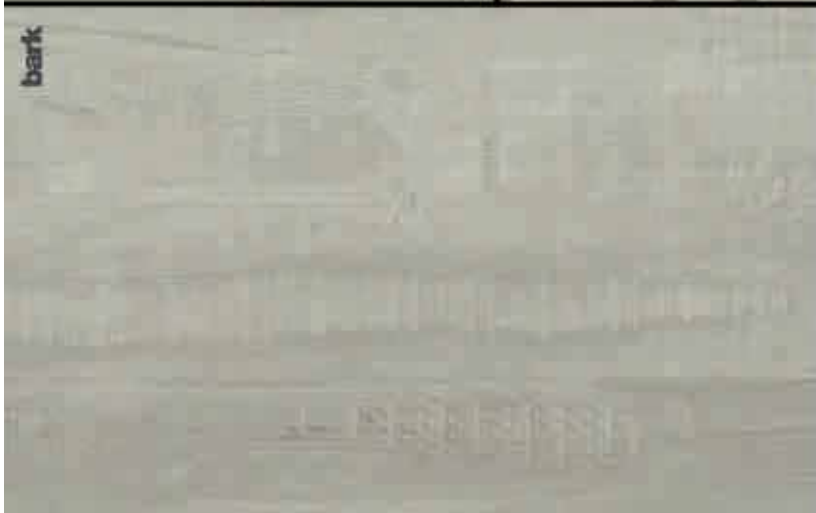


honed

brushed



decor



bark

**06**  
**mixable**  
**surfaces**



glass

honed

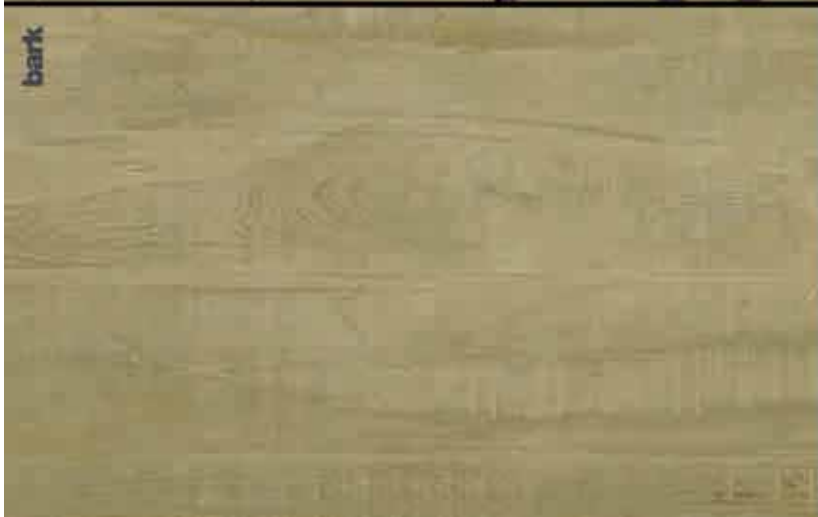
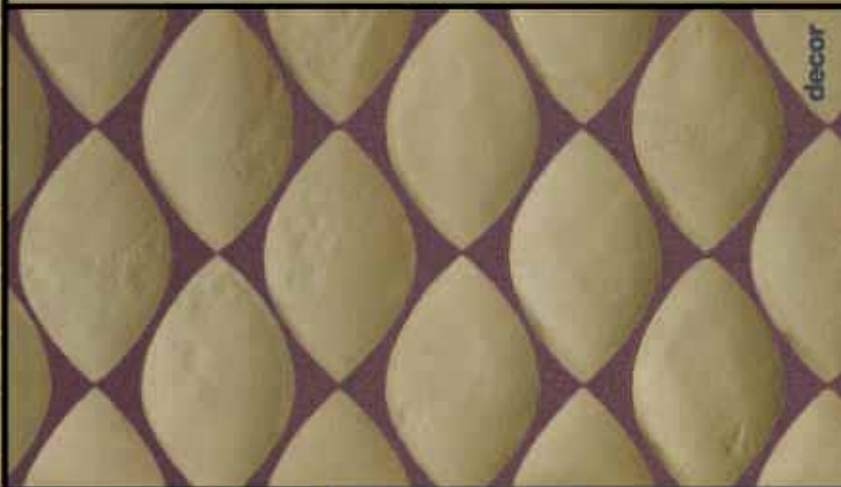
brushed

decor

bark

# 07

**mixable  
surfaces**





glass



honed

brushed



decor



bank

# 08

**mixable  
surfaces**

# “materia” project

FLORIM OVERSIZE  
magnUm®

GRES FINE PORCELLANATO

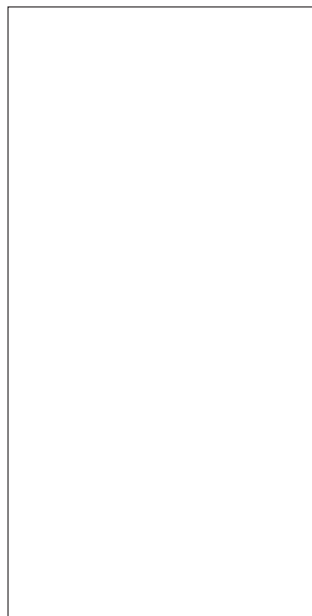
FINE PORCELAIN STONEWARE - GRÈS CÉRAME FIN - FEINSTEINZEUG-KOLLEKTIONEN - GRES PORCELÁNICO FINO - фарфоровый керамогранит  
SQUADRATO - SQUARED - EQUARRI - REKTIFIZIERT - ESCUADRADO - КАЛИБРОВАННАЯ

Spessore

Thickness - Épaisseur - Stärke Espesor - Толщина

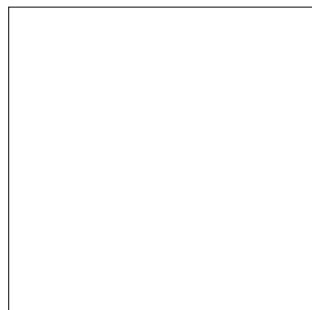
≈6mm 1/4”

## HONED



120x240 47<sup>1/8</sup>”x94<sup>3/8</sup>”

01. honed 745928  
02. honed 745929  
05. honed 745930



120x120 47<sup>1/8</sup>”x47<sup>1/8</sup>”

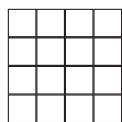
01. honed 745931  
02. honed 745932  
05. honed 745933



60x120 23<sup>5/8</sup>”x47<sup>1/8</sup>”

01. honed 757741  
02. honed 757742  
05. honed 757743

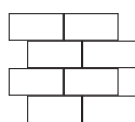
mosaico  
tessere 7,5x7,5



30x30 11<sup>3/4</sup>”x11<sup>3/4</sup>”

01. honed 747824  
02. honed 747825  
05. honed 747826

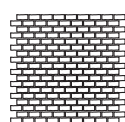
mosaico  
tessere 7,5x15



30x30 11<sup>3/4</sup>”x11<sup>3/4</sup>”

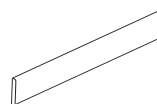
01. honed 747839  
02. honed 747840  
05. honed 747841

mosaico  
tessere 1,5x3



30x30 11<sup>3/4</sup>”x11<sup>3/4</sup>”

01. honed 747854  
02. honed 747855  
05. honed 747856



4,6x80 1<sup>3/4</sup>”x31<sup>1/2</sup>”

01. honed 747900  
02. honed 747901  
05. honed 747902

# “materia” project



GRES FINE PORCELLANATO

FINE PORCELAIN STONEWARE - GRÈS CÉRAME FIN - FEINSTEINZEUG-KOLLEKTIONEN - GRES PORCELÁNICO FINO - фарфоровый керамогранит  
SQUADRATO - SQUARED - EQUARRI - REKTIFIZIERT - ESCUADRADO - КАЛИБРОВАННАЯ

Spessore

Thickness - Épaisseur - Stärke - Espesor - Толщина

≠ 10mm 3/8"

## CRUSTED



80x180 31<sup>1/2</sup>"x70<sup>3/4</sup>"

- 01. crusted 738476
- 02. crusted 738477
- 03. crusted 738478
- 04. crusted 738479
- 05. crusted 738481



40x180 15<sup>3/4</sup>"x70<sup>3/4</sup>"

- 01. crusted 739222
- 02. crusted 739223
- 03. crusted 739224
- 04. crusted 739225
- 05. crusted 739226



60x120 23<sup>5/8</sup>"x47<sup>1/8</sup>"

- 01. crusted 738689
- 02. crusted 738690
- 03. crusted 738691
- 04. crusted 738692
- 05. crusted 738693

# “materia” poxy

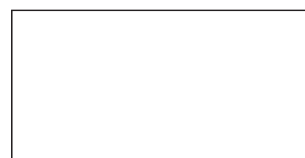
matching grout  
sigillante coordinato

- 01  01. stucco 740863
- 02  02. stucco 740864
- 03  03. stucco 740865
- 04  04. stucco 740866
- 05  05. stucco 740867
- 06  06. stucco 740868
- 07  07. stucco 740869
- 08  08. stucco 740870



20x120 7<sup>7/8</sup>"x47<sup>1/8</sup>"

- 01. crusted 738900
- 02. crusted 738910
- 03. crusted 738920
- 04. crusted 738921
- 05. crusted 738922



40x80 15<sup>3/4</sup>"x31<sup>1/2</sup>"

- 01. crusted 738694
- 02. crusted 738695
- 03. crusted 738696
- 04. crusted 738697
- 05. crusted 738698

Per la scheda di sicurezza e il consumo di sigillante consultare il sito [www.casadolcecasa.com](http://www.casadolcecasa.com)  
For safety sheet and sealant consumption please visit [www.casadolcecasa.com](http://www.casadolcecasa.com)  
Pour la fiche de sécurité et la consommation de mortier joint consultez [www.casadolcecasa.com](http://www.casadolcecasa.com)  
Für das Sicherheitsdatenblatt und die Verbrauchstabellen konsultieren Sie bitte die homepage [www.casadolcecasa.com](http://www.casadolcecasa.com)  
Para la ficha de seguridad y el consumo de sellador consulte el sitio [www.casadolcecasa.com](http://www.casadolcecasa.com)  
Карта безопасности и приводится о расходе герметика приводятся на сайте [www.casadolcecasa.com](http://www.casadolcecasa.com)

# “materia” project

GRES FINE PORCELLANATO

FINE PORCELAIN STONWARE - GRÈS CÉRAME FIN - FEINSTEINZEUG-KOLLEKTIONEN - GRES PORCELÁNICO FINO - фарфоровый керамогранит  
SQUADRATO - SQUARED - EQUARRI - REKTIFIZIERT - ESCUADRADO - КАЛИБРОВАННАЯ

Spessore

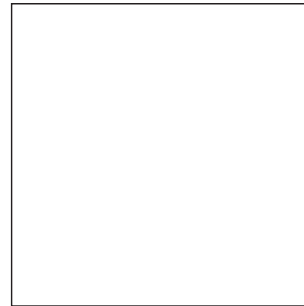
Thickness - Épaisseur - Stärke - Espesor - Толщина

≠ 10mm 3/8"

## HONED BRUSHED



V2



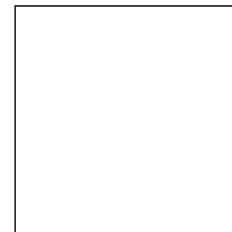
80x80 31 1/2"x31 1/2"

01. honed 738443 . brushed 738451  
02. honed 738444 . brushed 738452  
03. honed 738445 . brushed 738453  
04. honed 738446 . brushed 738454  
05. honed 738447 . brushed 738455  
06. honed 738448 . brushed 738456  
07. honed 738449 . brushed 738457  
08. honed 738450 . brushed 738458



20x80 7 7/8"x31 1/2"

01. honed 739227 . brushed 739235  
02. honed 739228 . brushed 739236  
03. honed 739229 . brushed 739237  
04. honed 739230 . brushed 739238  
05. honed 739231 . brushed 739239  
06. honed 739232 . brushed 739240  
07. honed 739233 . brushed 739241  
08. honed 739234 . brushed 739242



60x60 23 5/8"x23 5/8"

01. honed 738459 . brushed 738467  
02. honed 738460 . brushed 738468  
03. honed 738461 . brushed 738469  
04. honed 738462 . brushed 738470  
05. honed 738463 . brushed 738471  
06. honed 738464 . brushed 738472  
07. honed 738465 . brushed 738473  
08. honed 738466 . brushed 738474

## BARK



V4



20x120 7 7/8"x47 1/8"

01. bark 738923  
02. bark 738924  
03. bark 738925  
04. bark 738926  
05. bark 738927  
06. bark 738928  
07. bark 738929  
08. bark 738930



15x120 5 7/8"x47 1/8"

01. bark 739244  
02. bark 739245  
03. bark 739246  
04. bark 739247  
05. bark 739248  
06. bark 739249  
07. bark 739250  
08. bark 739251

# “materia” project

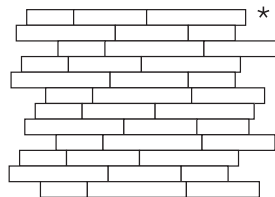
## VETRO

GLASS - VERRE - KLARGLAS - VIDRIO - Стекло

### MODULO LISTELLO SFALSATO

montato su pellicola trasparente  
mounted on transparent film  
monté sur film transparent  
auf transparenter Folie montiert  
montado en una película transparente  
установленный на прозрачной пленке

22,5x25 8<sup>7/8</sup>"x9<sup>7/8</sup>"



- 01. glass 739209
- 02. glass 739210
- 03. glass 739211
- 04. glass 739212
- 05. glass 739213
- 06. glass 739214
- 07. glass 739215
- 08. glass 739216

Spessore  
Thickness - Épaisseur - Stärke - Espesor - Толщина

≠ 4,5mm 1/8"

V2



Per le informazioni sulla posa consultare il sito [www.casadolcecasa.com](http://www.casadolcecasa.com)  
For installation information please visit the website [www.casadolcecasa.com](http://www.casadolcecasa.com)  
Pour plus d'informations sur l'installation visitez le site [www.casadolcecasa.com](http://www.casadolcecasa.com)  
Informationen zur Installation entnehmen Sie unserer Website [www.casadolcecasa.com](http://www.casadolcecasa.com)  
Para más información de instalación visite el sitio web [www.casadolcecasa.com](http://www.casadolcecasa.com)

\*Da utilizzare solo a rivestimento./To be used as coating only. / Da utiliser uniquement comme revêtement. /Nur als Wandbelag zu nutzen./Usar sólo con revestimiento.  
должна использоваться только для облицовки.

### GRES FINE PORCELLANATO

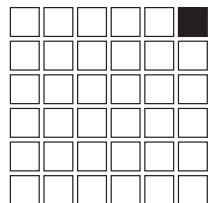
FINE PORCELAIN STONEWARE - GRÈS CÉRAME FIN - FEINSTEINZEUG-KOLLEKTIONEN - GRES PORCELÁNICO FINO - фарфоровый керамогранит  
SQUADRATO - SQUARED - EQUARRI - REKTIFIZIERT - ESCUADRADO - КАЛИБРОВАННАЯ

### MOSAICO HONED

montato su rete - mounted on net  
appliqué sur filet - auf Netz  
montado en la red - на сеточной основе

5x5 2"x2"

30x30 11<sup>3/4</sup>"x11<sup>3/4</sup>"



- 01. honed 739521
- 02. honed 739522
- 03. honed 739523
- 04. honed 739524
- 05. honed 739525
- 06. honed 739526
- 07. honed 739527
- 08. honed 739528

### MODULO LISTELLO SFALSATO MIX 3D HONED/BRUSHED

montato su rete - mounted on net  
appliqué sur filet - auf Netz  
montado en la red - наносится на сетку



15x60 5<sup>7/8</sup>"x23<sup>5/8</sup>"

- 01. honed/brushed 739537
- 02. honed/brushed 739538
- 03. honed/brushed 739539
- 04. honed/brushed 739540
- 05. honed/brushed 739541
- 06. honed/brushed 739542
- 07. honed/brushed 739543
- 08. honed/brushed 739544

### MODULO LISTELLO SFALSATO HONED

montato su rete - mounted on net  
appliqué sur filet - auf Netz  
montado en la red - наносится на сетку



21x40 8<sup>1/4</sup>"x15<sup>3/4</sup>"

- 01. honed 739529
- 02. honed 739530
- 03. honed 739531
- 04. honed 739532
- 05. honed 739533
- 06. honed 739534
- 07. honed 739535
- 08. honed 739536

### TRIANGLE



80x80 31<sup>1/2</sup>"x31<sup>1/2</sup>"

triangle /02 brushed/03 honed 739502

### DECOR



20x80 7<sup>7/8</sup>"x31<sup>1/2</sup>"

- 01. decor 739625
- 02. decor 739626
- 03. decor 739627
- 04. decor 739628
- 05. decor 739629
- 06. decor 739630
- 07. decor 739631
- 08. decor 739632

“materia” project decor ha un aspetto fortemente materico; il carattere artigianale del progetto, dell'effetto decorativo d'insieme e la stessa posa in opera fanno sì che le forme ovali risultanti dall'accostamento dei bordi delle lastre potrebbero risultare diverse da quelle interamente realizzate in superficie dal processo produttivo. / The “materia” project decor has a highly textured appearance; given the artisan nature of the project, producing an overall decorative effect, and the installation process, the oval shapes resulting from matching the tile edges may be different to those on the surface of each tile. / “materia” project décor a un aspect fortement lié à la matière ; le caractère artisanal du projet et de l'effet décoratif d'ensemble ainsi que la pose peuvent amener les formes ovales découlant du rapprochement des bords des dalles à présenter un résultat différent par rapport à celles entièrement réalisées en surface par le processus de production. / “materia” project decor besitzt ein sehr plastisches Aussehen; der handwerkliche Charakter des Projektes und des Dekoreffektes in seinem Ganzen bewirkt gemeinsam mit der Verlegung, dass die sich aus dem Nebeneinanderlegen von Plattenkanten ergebenden ovalen Formen anders ausfallen können als die auf der Oberfläche gänzlich vom Herstellungsprozess erzielten. / El aspecto de “materia” project decor es muy material; el carácter artesanal del proyecto, del efecto decorativo en su globalidad y la propia colocación hacen que las formas ovales, resultado de juntar los bordes de las losas, puedan ser diferentes de aquellas realizadas internamente en superficie por el proceso productivo. / Декор “materia” project выглядит очень рельефно. С учётом особенностей ремесленной выработки, общего декоративного эффекта композиции и укладки овальные формы, образующиеся при совмещении краёв пластин, могут отличаться от изначально реализованных на плоскости на заводе.

# “materia” project

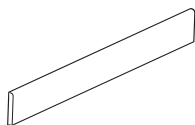
GRES FINE PORCELLANATO

FINE PORCELAIN STONWARE - GRÈS CÉRAME FIN - FEINSTEINZEUG-KOLLEKTIONEN - GRES PORCELÁNICO FINO - фарфоровый керамогранит  
SQUADRATO - SQUARED - EQUARRI - REKTIFIZIERT - ESCUADRADO - КАЛИБРОВАННАЯ

## PEZZI SPECIALI

SPECIAL TRIMS - PIÈCES SPÉCIALES - FORMSTÜCKE - PIEZAS ESPECIALES - Специальные изделия

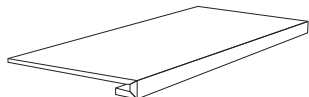
### Battiscopa



4,6x60 1<sup>3</sup>/<sub>4</sub>"x23<sup>5</sup>/<sub>8</sub>"

- 01. bark 745410 . honed 745402
- 02. bark 745411 . honed 745403
- 03. bark 745412 . honed 745404
- 04. bark 745413 . honed 745405
- 05. bark 745414 . honed 745406
- 06. bark 745415 . honed 745407
- 07. bark 745416 . honed 745408
- 08. bark 745417 . honed 745409

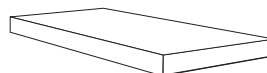
### Gradino



33x120x3 13"x47<sup>1</sup>/<sub>8</sub>"x1<sup>1</sup>/<sub>8</sub>"

- 01. bark 739561
- 02. bark 739562
- 03. bark 739563
- 04. bark 739564
- 05. bark 739565
- 06. bark 739566
- 07. bark 739567
- 08. bark 739568

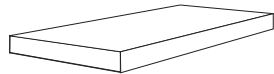
### Angolo Gradino DX



33x120x3 13"x47<sup>1</sup>/<sub>8</sub>"x1<sup>1</sup>/<sub>8</sub>"

- 01. bark 739569
- 02. bark 739570
- 03. bark 739571
- 04. bark 739572
- 05. bark 739573
- 06. bark 739574
- 07. bark 739575
- 08. bark 739576

### Angolo Gradino SX



33x120x3 13"x47<sup>1</sup>/<sub>8</sub>"x1<sup>1</sup>/<sub>8</sub>"

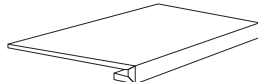
- 01. bark 739577
- 02. bark 739578
- 03. bark 739579
- 04. bark 739580
- 05. bark 739581
- 06. bark 739582
- 07. bark 739583
- 08. bark 739584

### Angolo Gradino DX/SX

33x120x3 13"x47<sup>1</sup>/<sub>8</sub>"x1<sup>1</sup>/<sub>8</sub>"

- 01. bark 739585
- 02. bark 739586
- 03. bark 739587
- 04. bark 739588
- 05. bark 739589
- 06. bark 739590
- 07. bark 739591
- 08. bark 739592

### Gradino



33x60 13"x23<sup>5</sup>/<sub>8</sub>"

- 01. honed 739593 . brushed 739601
- 02. honed 739594 . brushed 739602
- 03. honed 739595 . brushed 739603
- 04. honed 739596 . brushed 739604
- 05. honed 739597 . brushed 739605
- 06. honed 739598 . brushed 739606
- 07. honed 739599 . brushed 739607
- 08. honed 739600 . brushed 739608

### Angolo Gradino



33x33 13"x13"

- 01. honed 739609 . brushed 739617
- 02. honed 739610 . brushed 739618
- 03. honed 739611 . brushed 739619
- 04. honed 739612 . brushed 739620
- 05. honed 739613 . brushed 739621
- 06. honed 739614 . brushed 739622
- 07. honed 739615 . brushed 739623
- 08. honed 739616 . brushed 739624

#### V1 LOW



**Prodotto monocromatico.**  
The least amount of shade and texture variation.  
Attainable in naturally fired clay products.  
Produit monochromatique.  
Einfarbiges Produkt.  
Producto monocromático.

#### V2 MODERATE



**Prodotto con leggera variazione cromatica.**  
Light to moderate shade and texture variation within each carton.  
Produit à légère variation chromatique.  
Produkt mit leichter Farbnuance.  
Producto con una pequeña variación cromática.

#### V3 HIGH



**Prodotto con marcata variazione cromatica.**  
High shade texture variation within each carton.  
Produit à variation chromatique accentuée.  
Produkt mit ausgeprägter Farbnuance.  
Producto con evidente variación cromática.

#### V4 RANDOM



**Prodotto con forte variazione cromatica.**  
Very high shade and texture variation within each carton.  
Produit à forte variation chromatique.  
Produkt mit starker Farbnuance.  
Producto con fuerte variación cromática.



**c a s a m o o d . c o m**



**Florim Ceramiche S.p.A.**

Sede Legale: Via Canaletto, 24 . 41042 Fiorano Modenese (MO)  
Italy . tel. +39 0536 840111 - fax +39 0536 844750  
casamood.com